

FLOOR PLAN - MAIN RESIDENCE (LOWER LEVEL)

1310 HUDSON AVE | ST. HELENA, CA



MATT BJORNER | 310.528.1768 MB@vanguardnapa.com DRE#01875408
VANGUARD PROPERTIES

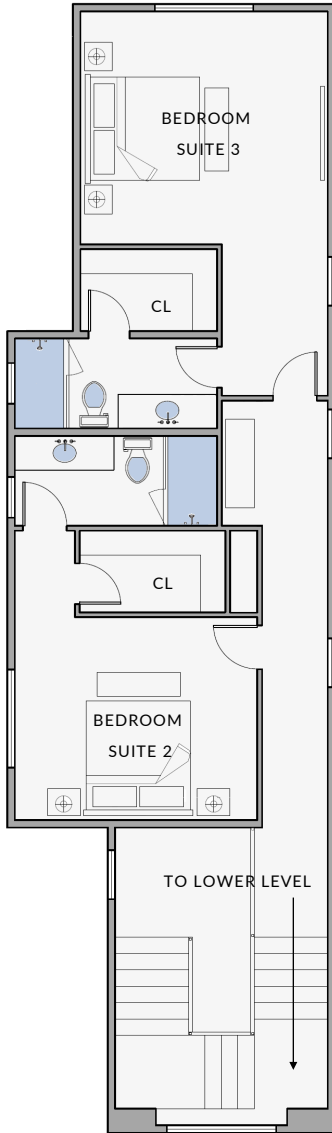
HILLARY RYAN | 707.312.2105 Hillary@hillaryryangroup.com DRE#01934302
SOTHEBY'S INTERNATIONAL REALTY



Rendering and measurements provided by third party. All measurements are approximate and may not be exact. Vanguard Properties and Sotheby's International Realty has not and will not verify same. Do not rely on accuracy of these plans or the measurements contained therein when determining the price to pay for the property, or making decisions regarding buying or selling the property, without independent verification. Buyer is advised to verify the rendering and measurements with the appropriate professionals.

FLOOR PLAN - MAIN RESIDENCE (UPPER LEVEL)

1310 HUDSON AVE | ST. HELENA, CA



FLOOR PLAN - ACCESSORY DWELLING (ADU)



ROOM BREAKDOWN + AMENITIES

MAIN RESIDENCE - 3,698 +/- sf

LOWER LEVEL

- ENTRY FOYER
- GREAT ROOM
 - LIVING AREA
 - DINING ROOM
 - KITCHEN w/ EAT-IN ISLAND
- SCULLERY
 - PANTRY, PREP + LAUNDRY
- POWDER ROOM
- PRIMARY BEDROOM SUITE

UPPER LEVEL

- BEDROOM SUITE 2
- BEDROOM SUITE 3

ACCESSORY DWELLING - 799 +/- sf

- LIVING ROOM / DINING
 - KITCHEN
- BEDROOM SUITE 4
- BEDROOM SUITE 5

AMMENITIES

- LOGIA - 466 +/- sf
 - OUTDOOR KITCHEN
- INTERIOR COURTYARD - 963 +/- sf
 - OUTDOOR FIREPLACE
 - OUTDOOR DINING / LIVING
- POOL + SPA - 14' X 40'

- MAIN GATED DRIVEWAY: 1-CAR GARAGE
- SECONDARY DRIVEWAY: 1-CAR OUTDOOR



HURLEY HAFÉN

THOUGHTFULLY
CURATED HOMES

MATT BJORNER | 310.528.1768 MB@vanguardnapa.com DRE#01875408
VANGUARD PROPERTIES

HILLARY RYAN | 707.312.2105 Hillary@hillaryryangroup.com DRE#01934302
SOTHEBY'S INTERNATIONAL REALTY



Rendering and measurements provided by third party. All measurements are approximate and may not be exact. Vanguard Properties and Sotheby's International Realty has not and will not verify same. Do not rely on accuracy of these plans or the measurements contained therein when determining the price to pay for the property, or making decisions regarding buying or selling the property, without independent verification. Buyer is advised to verify the rendering and measurements with the appropriate professionals.